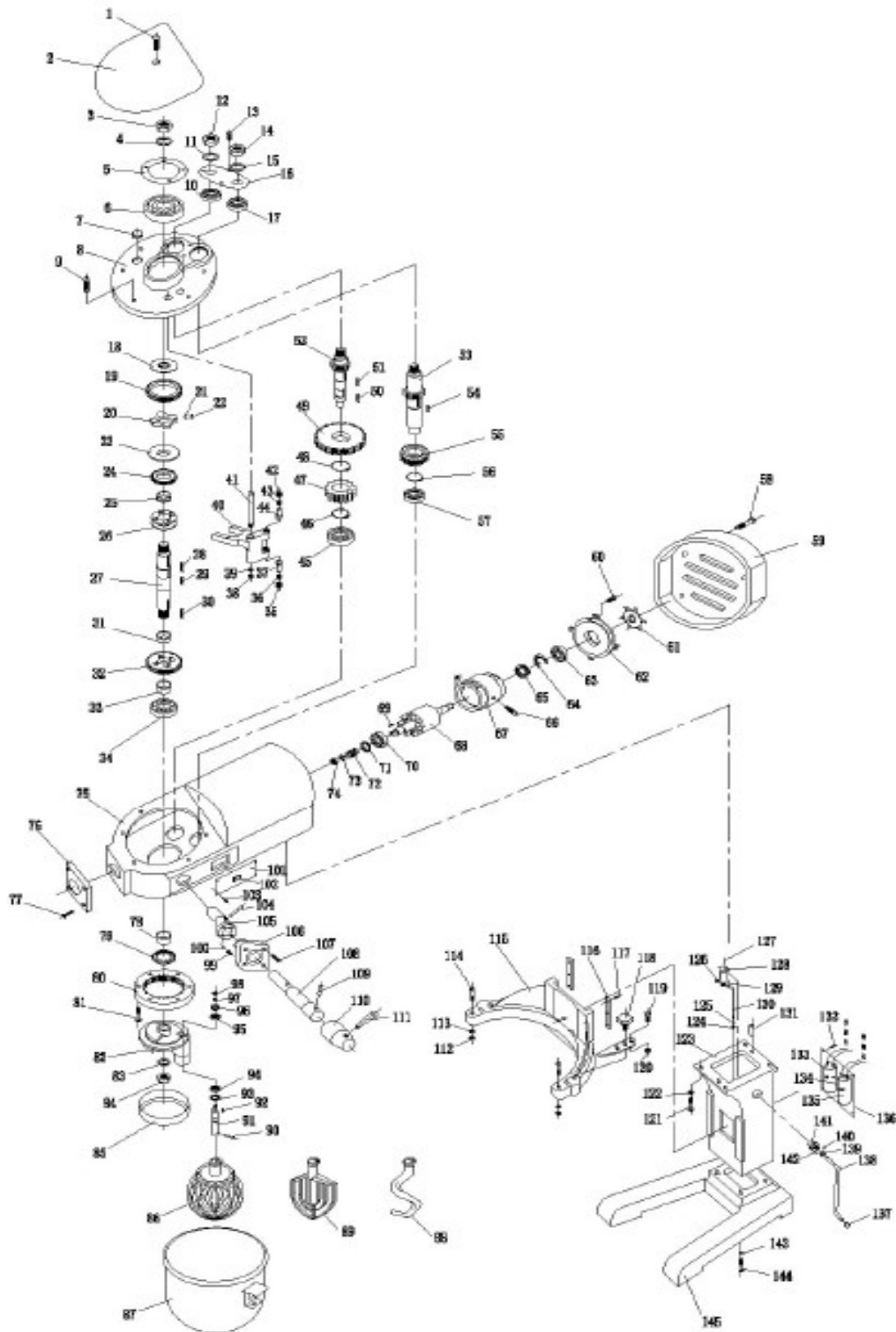


МИКСЕР ПЛАНЕТАРНЫЙ HURAKAN HKN-IP30FM




МИКСЕР ПЛАНЕТАРНЫЙ HURAKAN HKN-IP30FM

Поз	Наименование детали				
1	Screw M6X30	58	Screw M5X50	115	Barrell holder
2	Cover	59	Rear	116	Flat clamp
3	Nut M12	60	Screw M5X16	117	Screw M6X16
4	Washer 12	61	Motor Fan	118	Locking pin
5	Bearing plate pinch 2	62	Bake Cover	119	Screw M6X20
6	Bearing 6203	63	Bearing 6204	120	Washer 6
7	Oil-lide cover	64	Bottom plate	121	Screw M8X235
8	Bearing cap	65	Centrifugal switch	122	Ring washer 8
9	Screw M6X25	66	Screw M6X30	123	Guide pillar
10	Bearing	67	Stator	124	Nut M10
11	Washer 10	68	Rotor	125	Washer 10
12	Nut M10	69	Dowel 3X25	126	Washer 10
13	Screw M4X8	70	Bearing 6204	127	Pin 4X40
14	Nut M10	71	Oil Seal 17x35X10	128	Cam
15	Washer 10	72	Main transmission worm	129	Cotter pin
16	Bearing plate pinch 1	73	Ring washer 10	130	Lifeing hook
17	Bearing 6201	74	Nut M10	131	Straight Pin 8X16
18	Cam splint	75	Case	132	Screw M4X8
19	Gear rim Z=49	76	Viewport Cover	133	Capacitor 150UF
20	Cam	77	Screw M5X15	134	Screw M6X15
21	Leaf Spring	78	Sleeve	135	Capacitor 25UF
22	Cylindrical roller 8X16	79	Oil seal 30X45X10	136	Plate
23	Cam circle	80	Ring gear Z=60	137	Ball
24	Gear Z=30	81	Screw M6X25	138	Lifting crank
25	Sliding collar	82	Planetary Gear Holder	139	Sleeve
26	Conjugant	83	Washer 16	140	Resilient pin 4X25
27	Center shafe	84	Nut M16	141	Lifting sleeve
28	Dowel 6X25	85	Ring	142	Screw M6X15
29	Dowel 5X35	86	Wire Whip	143	Ring washer 10
30	Dowel 6X45	87	Charging barrel	144	Screw M8X45
31	Sliding collar	88	Dough mixer	145	Footing
32	Gear Z=43	89	Agitator		
33	Spacer Sleeve	90	Straight pin 8X25		
34	Bearing 6205	91	Planetary gear shaft		
35	Regulating Nut	92	Dowel 5X20		
36	Spring	93	Oil seal 25X50X10		
37	Fork contact	94	Bearing 6005		
38	Nut M10	95	Bearing 6003		
39	Ring washer 10	96	Planetary gear Z=18		
40	Shift fork	97	Washer 12		
41	Fork Shaft	98	Nut M12		
42	Regulating Nut	99	Posicioning spring		
43	Spring	100	Steel ball D6		
44	Shift fork	101	Label		
45	Bearing 6201	102	Switch		
46	Snap spring 17	103	Screw M4X6		
47	Gear Z=20	104	Conical pin 4X20		
48	Snap spring 19	105	Knee-piece		
49	Gear Z=33	106	Locating Cover plate		
50	Dowel 5X12	107	Screw M6X14		
51	Dowel 5X12	108	Hinge pin		
52	Second motion shaft Z=14	109	Conical pin 4X20		
53	Input shaft Z=18	110	Locating sleeve		
54	Dowel 5X14	111	Shiftfork handle		
55	Worm Z=29	112	Nut M8		
56	Snap spring 19	113	Spring washer 8		
57	Bearing 6201	114	Anchor Pin		